

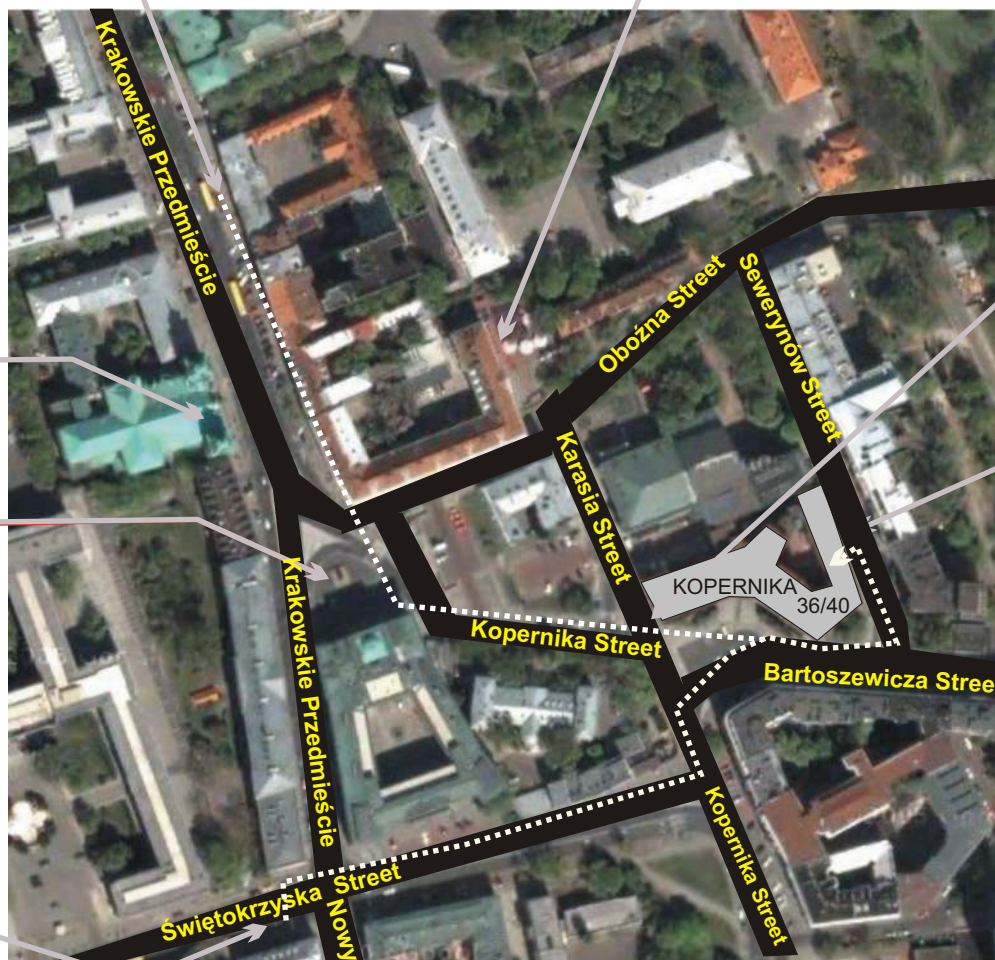
HOSTEL HELVETIA

Kopernika 36/40 - entrance on Sewerynow Street
00-924 Warszawa / Warsaw - Poland
phone / fax +48 22 826 71 08,
email: info@hostel-helvetia.pl
<http://www.hostel-helvetia.pl>
Skype: hostel-helvetia-warsaw



Bus 175 stops here

Pub Harenda



Church

Monument of Copernicus



Bus 102 stops here



Our banner hangs here

ENTRANCE TO HOSTEL HELVETIA !



How to get

To get to the Hostel Helvetia you have to get off the bus 175 at the Warsaw University (bus stop labeled **UNIWERSYTET 02**). After leaving the bus turn back and follow the main road for about 150 steps until you get close to the **Monument of Copernicus**. Turn left and follow Kopernika Street up to the crossroad with Karasia Street (about 130 steps). You'll see **our banner** hanging on your left. The hostel is located in the building with banner. To find **the entrance** you have to follow Bartoszewicza Street and then turn left in Sewerynow Street as shown on the map. You should reach the entrance in about 130 steps from the banner.

You can also take a bus 102 from Central Railway Station and get off at the corner of Swietokrzyska and Krakowskie Przedmiescie. The bus stop is labeled **NOWY SWIAT 03**. After leaving the bus, cross both streets: Swietokrzyska and Krakowskie Przedmiescie, then follow Swietokrzyska Street for about 150 meters to the Kopernika Street.

Turn left and follow Kopernika Street (15m) until crossroad with Bartoszewicza Street. Turn right, follow Bartoszewicza Street for about 30 meters and turn left in to Sewerynow Street. After you reach Sewerynow Street follow the orange colored wall to reach the entrance.

From The Airport

Take bus 175 to **UNIWERSYTET 02** stop.

The taxi from the airport would cost about 30-40 PLN depending on the traffic and taxi. Please read information about taxis in section below.

From Warsaw Central Railway Station

Take bus 102 (the stop is just next to main hall, choose the exit next to tourist information). Exit on the 3rd stop labeled **NOWY SWIAT 03**.

You can also take a bus 175 (the stop is next to Marriott Hotel) and exit on the stop labeled **UNIWERSYTET 02**.

Taxi from the Central Railway Station should not cost more than 12-20 PLN depending on traffic.

Taking a Taxi in Warsaw

As in every big city, there are a lot of taxis waiting for naive tourists, offering them services for prices as much as four times higher than average.

Please read the following:

Do not take "no-name" taxis that have only word "Taxi" in their logo! Take only these ones which have also the name of a company, for example: Wawa Taxi, Halo Taxi, Sawa Taxi, MPT and so on.... Always check the fare - it must be placed on a sticker on one of the windows and should not be higher than 2 PLN /km (average is 1,60).